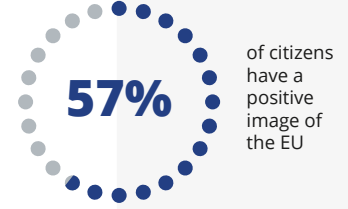
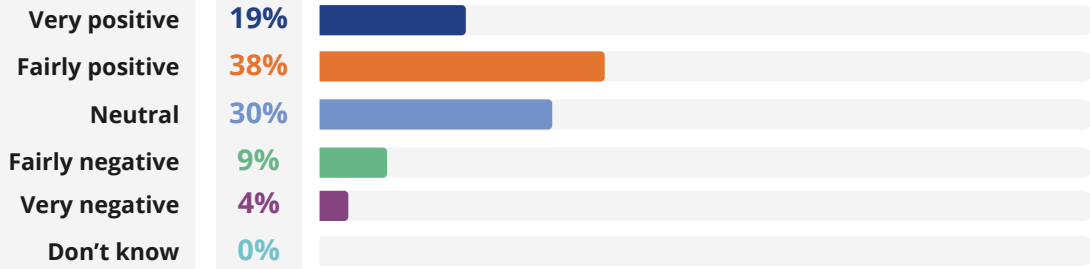


ANNUAL SURVEY 2026 - MOLDOVA

PERCEPTIONS TOWARDS THE EUROPEAN UNION

These findings are part of the independent Eastern Neighbourhood regional perception opinion poll, Spring 2026, 'EUNEIGHBOURS east' programme.

Attitudes towards the EU



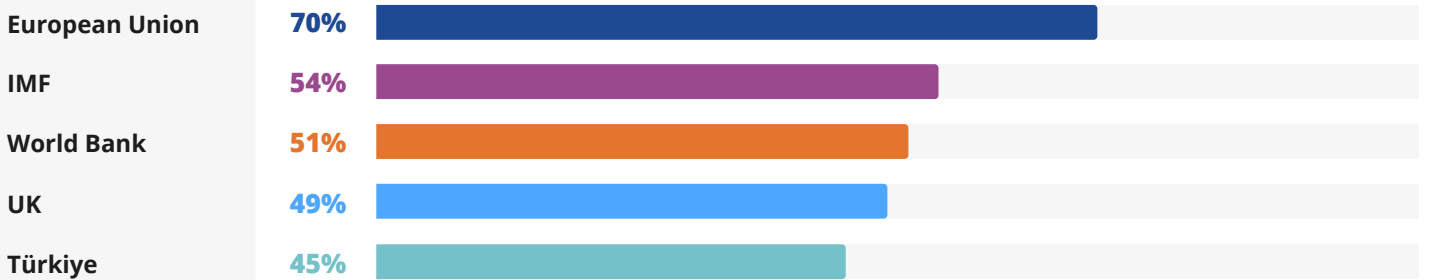
Top three factors citizens say would make them more positively disposed towards the EU



Top three areas where citizens say the EU should play a greater role in supporting Moldova



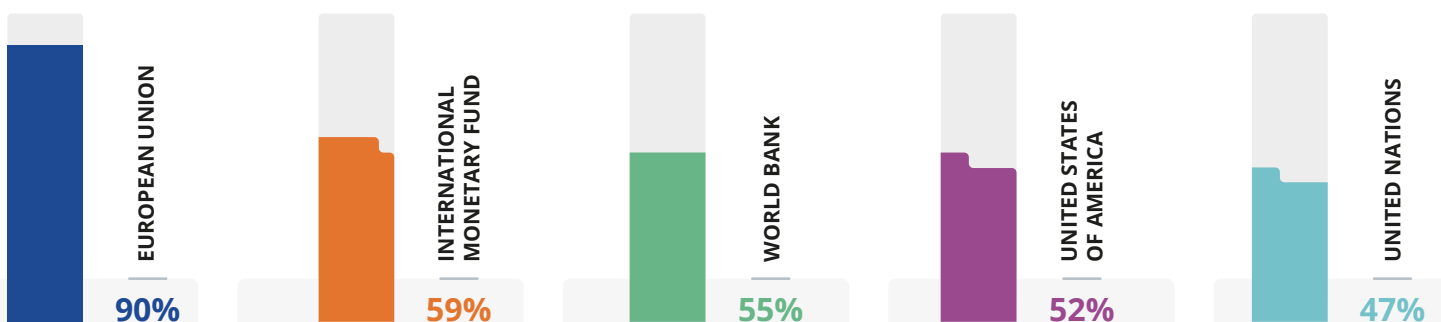
Trust towards the EU, countries and international institutions



Perception of support from international donors

Percentage of citizens who rate the support as either high or moderate

Respondents were asked to rate the financial support from very high to very low/none



EU financial support to Moldova

97% of citizens are aware of the EU's financial support



64% of citizens rate the EU's support as high or very high



77% of citizens believe that the EU is the country's largest financial contributor

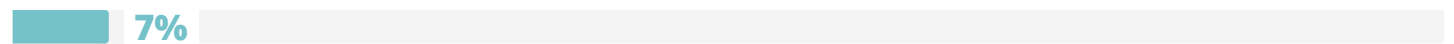
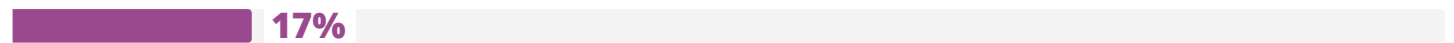
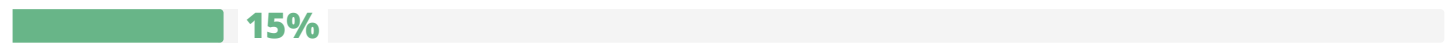
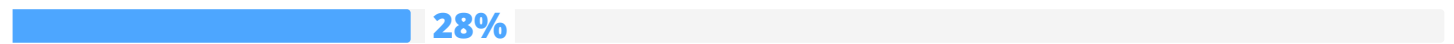
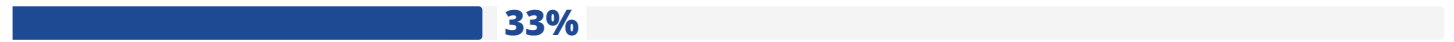


67% of citizens rate the EU's support as effective

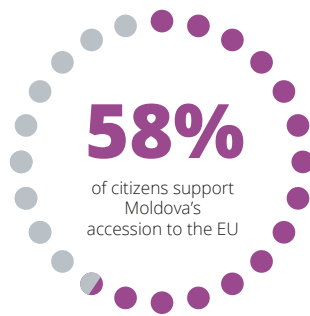
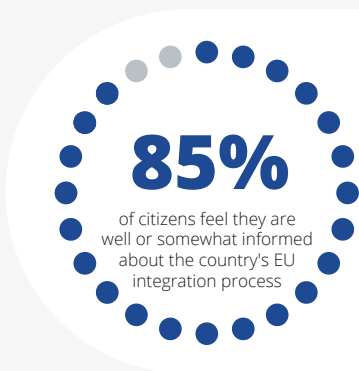


I think Moldova will become an EU Member State...

● In the coming 5 years ● Between 5 and 15 years ● It will take more than 15 years, but it will happen ● The country will never become an EU Member State ● Don't know



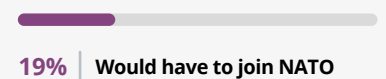
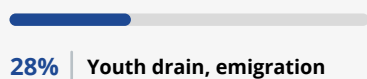
Citizens' views on EU accession



Perceived main benefits of EU membership



Perceived main concerns of EU membership



Perceived main obstacles to the accession

